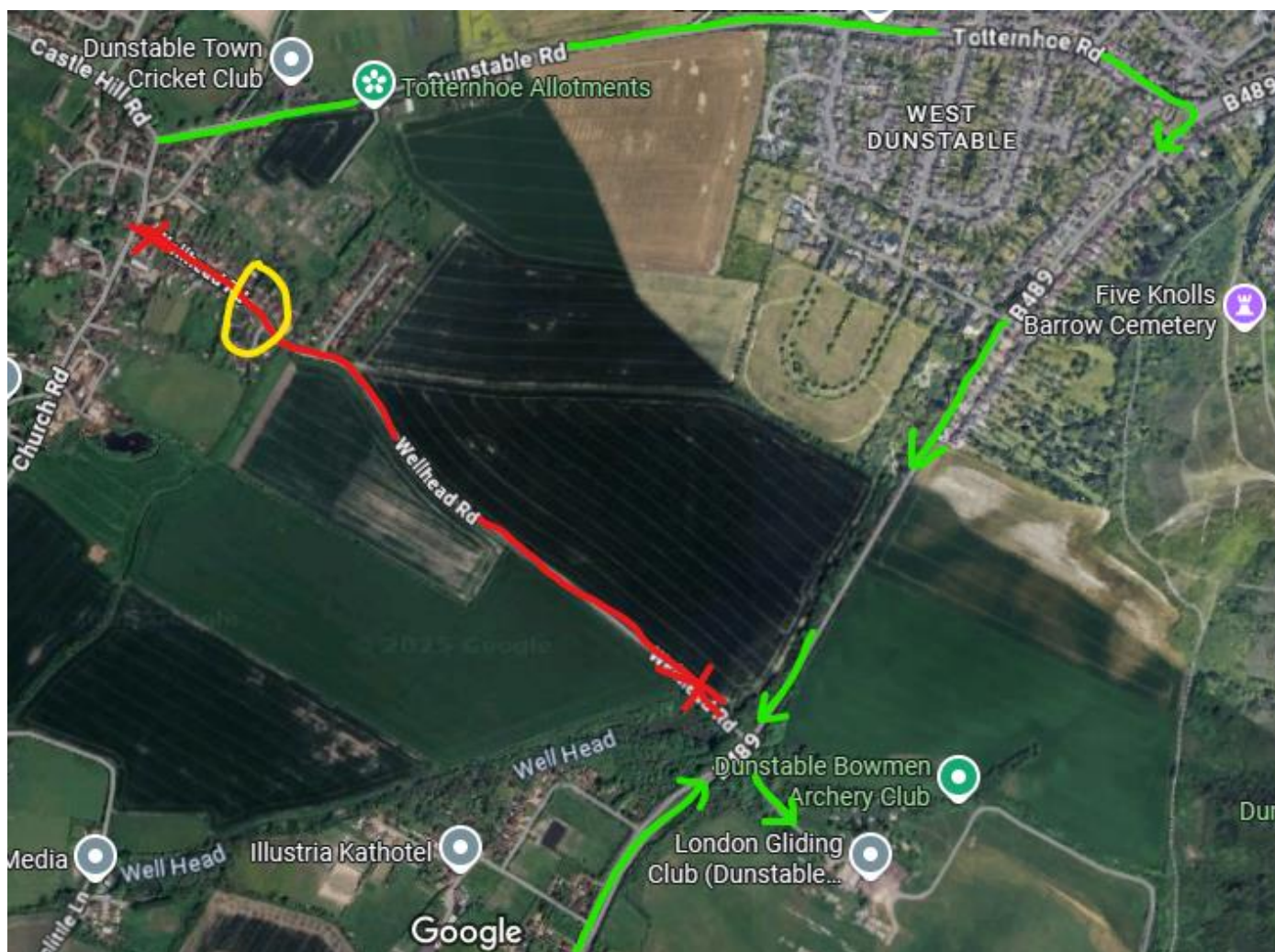


Wellhead Road Closure

From Friday 25th July at 08:00 until Monday 4th August at 18:00 BST, Wellhead Rd will be closed.

Please see the map below for a better visualisation.

Whilst the physical closure is only in place around the Yellow area (approximate), it would not be advisable to attempt to go down this road at all, particularly with a trailer.



It can be a useful way to access the club if approaching from the Leighton Buzzard direction and through Totternhoe village, as well as allowing for quick and easy access to the very nice pub at the other end!
(The Old Farm Inn – See SoaringSpot downloads page).

The only way to get to/from the club will be the B489 aka “the Tring Rd”. Green Arrows show the two routes to approach the club from, the top most being the alternative if coming through Totternhoe.